

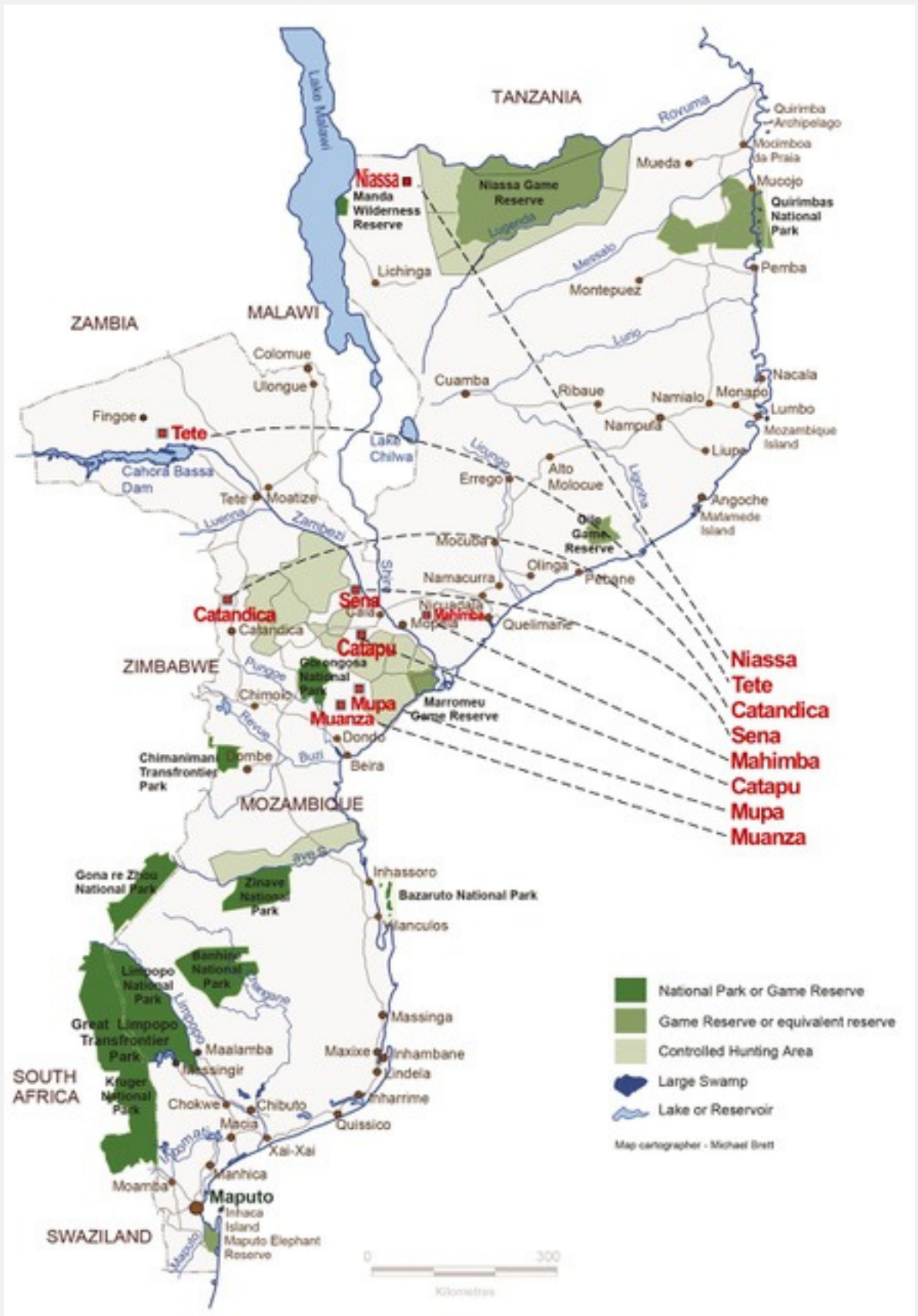


JANNIE OTTO SAFARIS

Mozambique

Do things at your
own pace.
Life's not a race.

info@jannieotto.com



How to get there

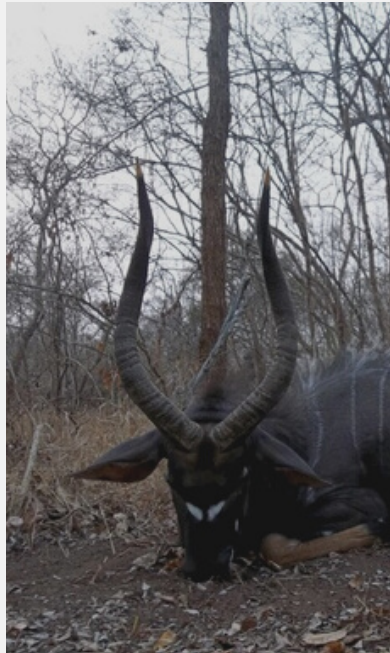


Niassa concession

Location

Niassa Province, Mozambique

- 2 hours' charter flight from Pemba direct to camp
- No other drive option to this camp as the distance is too great.
- Commercial flight from Johannesburg to Pemba and charter direct to the camp
- Hunting is best from July to November for all species in this area.



Fees

Hunters

14 Day Leopard Safari	USD1,500 per day
10 Day Buffalo Safari	USD1,400 per day

- Transfer of trophies from concession to taxidermist in Beira USD300
- Rifle Permit USD250 per rifle
- Hunters License USD450
- Community Conservation fee \$100 per day per hunter
- Charter USD 3,000-4,000 (approximate) for plane, Pemba/Niassa Camp/Pemba

Specie	Difficulty (1=Easy)	Price US\$
Leopard	3	8,000
Buffalo	6	4,800
Sable, Roosevelt	3	5,000
Eland, Livingstone	4	3,400
Hartebeest, Lichtenstein	4	3,400
Kudu, Greater	8	3,500
Bushbuck, Chobe	8	1,600
Reedbuck	5	1,200
Impala, Southern	9	800
Bushpig/Warthog	6	650
Wildebeest, Niassa	5	4,200
Hyena, Spotted	4	1,900
Waterbok	3	3,200
Zebra	8	3,400
Duiker, Grey	4	750
Baboon	2	250

Items Included in Daily Rate

- The service of a Professional Hunter(s) as agreed upon at the time of booking.
- The service of gun bearers, trackers, field and camp assistants, cooks and skinners.
- The use of well-equipped 4-wheel drive safari vehicles.
- Full accommodation, which includes daily laundry, all foods, alcoholic beverages (in moderation) and sodas.

Items NOT included in Daily Rate

- Trophy fees payable for animals killed or wounded
- Hunting permits & rifle permits
- Taxidermy fees (this also means dip & pack) as well as transfer of trophies to dip and pack agents
- Weapons and ammunition hire
- Vehicle transfers between hunting camps and to and from airports
- All charter flights
- Gratuities to staff
- Any hotel accommodation pre or post safari
- Medical Insurance

Species Priorities

As we work to a very strict quota system, hunters must advise us well in advance as to which animals they wish to hunt and in what order of priority.

Payment:

50% of the total daily rate is required to confirm the booking of a safari.

Should a client wish to cancel his safari the following will apply?

- If cancelled 180 days or more prior to the commencement of the safari, 100% of the deposit paid will be returned.
- If cancelled 90 - 180 days prior to commencement of the safari, the client will be eligible to 50% of the deposit paid.
- If cancelled 0 - 90 days prior to commencement of the safari, clients will forfeit the total deposit paid.

The balance of the daily rates needs to be paid 30 days before the safari is due to commence. The trophy fees for the animals that are killed or wounded are paid on completion of the safari in US\$ cash (notes not older than 2017) or EFT (Electronic Funds Transfer).

Daily rates are subject to change depending on Government increases and will be the trophy fee quoted for the year in which the safari takes place as per our Brochure.

Liability Form

Any safari activity is potentially hazardous and it is essential that all lawful directions and advice of the safari operator or Professional Hunter be followed. Jannie Otto Safaris accepts no responsibility for any illness, accident or loss whatsoever incurred during the safari or for any expense arising from your safari.

It is required to sign and accept the Liability Form.

General Info

Camp

The Niassa Camp is permanent style thatched chalets constructed out of Granite Boulders. The cabins all have en-suite bathrooms, hot water, complete bedding, mosquito nets, daily laundry and cleaning service as well as limited mobile phone service and WI-FI in camp.

Species

This concession has absolutely spectacular densities of leopard, buffalo, sable and plains game. Lion are brilliant too in this area. Due to the exceptional management of the area, this concession is allowed to export lion to the European Union. Please note there is a very strict minimum age criteria of 5 years for all lion taken. Niassa Concession was added to our portfolio in 2016 and is located on the western boundary of the famous Niassa Game Reserve. This area is huge and covers in excess of 500 000 hectares of wild Africa. Note lion, leopard & hyena are allowed to be hunted at night in this concession.

Elevation

1200-1500 feet

Temperature

- 40°F (05°C) is the coldest it will get at night or early morning.
- 100°F (37°C) is the warmest it will get as the elevation is substantially higher than our camps closer to the coast.

Rain

Generally rains are from December to March but due to the higher elevation this area can expect rain showers throughout the year.

Malaria

Malaria prophylaxis is required. Speak to your Medical Adviser.

Typical Day

Wake up before light to enjoy tea or coffee, a light breakfast and leave at first light. You will be hunting directly after leaving the camp and most hunting is conducted either by spot and stalk or walk and stalk depending on the species. Usually a packed lunch will be served and you will return to the camp in the evening. Typical shot distances can range from 50-200m, rarely ever more than this.





Global Rescue, Rip Cord or similar

We recommend Global Rescue, Rip Cord or similar as an international medical air rescue cover and travel insurance.

Electricity

Our camps are run with generators. The plugs are 2 prongs in the camp (same as EU plugs). We suggest you bring a converter for voltage differences as we are 220 Volt. There are charging points for camera's and video recorders. Most modern day chargers accept 110 - 220 Volts. Please check that yours does comply or else you will need to bring a converter from 220 Volts to 110 Volts. Please bring a multi plug adaptor with you to avoid disappointment.

Taxidermy Details

A reminder to please bring trophy tags to attach to your trophies. It is also important to know who you will be using to clear the trophies on arrival in your home country. This greatly reduces the likely hood of a mistake with your trophies. Most Taxidermists will provide this to you free of charge.

Dip & Pack

We field prepare all trophies to client's instructions and deliver them to a local dipping and packing company as above for dipping, packing and exportation.

What to Pack

The following list is only a general guideline of what to bring on safari. Please remember laundry is done

on a daily basis so avoid bringing huge amounts of clothing.

- Four sets of brown, green or dark khaki lightweight safari outfits. Camouflage clothing is legal, as long as it's not military style
- A soft comfortable hat
- Good walking boots that are quiet and worn in
- Quick drying, strong sandals if you're hunting hippo/crocodile
- A sweater or windproof jacket for the cool early mornings and evenings
- Camera
- Multi Plug Adaptor
- Binoculars
- A sharp knife
- A flashlight with batteries
- Repellents: Mosquito repellent and/or Avon Skin-so-Soft
- A few 1oz. Gatorade sachets for rehydration, some days can get hot and humid
- Again, the PH would appreciate any extra you can fit in your luggage

Firearms

It is possible to hire firearms and we have the following to choose from:

- 12 Gauge shotgun O/U
- 30-06
- 375 H & H
- 458 Win Mag.

Clients hiring weapons will be charged \$30 per day for the duration of the safari, regardless of calibre and if he or she actually fires the weapon or not. This does not include ammunition which will be charged separately.

If bringing your own weapons to Mozambique you are required to send us your rifle details at least two months before your safari is due to commence. Please do not change rifles once you have submitted the details to us. A Mozambican gun permit is then processed at the fee of \$250 per weapon (please note in the case of Blaser Rifles with numerous barrels you will be charged \$250 per barrel). A maximum allowance of two rifles and one shotgun with 100 rounds per weapon is allowed into Mozambique. Please specify how many rounds of ammunition you intend to bring for each calibre so we can apply for these on your license.

For dangerous game such as elephant, buffalo and lion, calibres of .375 are advised. For soft skinned animals, any weapon in the 30 Calibre range is recommended. For the heavier calibre weapons we prefer a mixture of solid and soft nosed ammunition whilst just soft nosed bullets are preferred for the lighter calibre weapons. Trophy bonded, Swift A-Frame or Barnes X are good choices. Please note, the government of Mozambique are levying a tax per bullet used on safari of \$2 per round which will need to be paid at the end of the safari at the airport to customs direct.

Travelling With Rifles

Clients who overnight in Johannesburg, South Africa on their way to us will have to complete firearms forms for South Africa.

Hunting Licences / Area Permit

HUNTER ONLY, to send me the following by email:

Mozambique Hunting Licence - \$350 Per Licence (single area) - \$600 Per License (Multiple areas)

- A scanned copy of your valid Passport (The page with your name etc on it)
- A scanned copy of a Passport sized (head & shoulders) photo
- Mozambique Rifle Licence - \$250 per Rifle or additional barrels
- Number of rifles you will be bringing to Mozambique - (NOTE: MAXIMUM OF 2 RIFLES AND ONE SHOTGUN ARE ALLOWED PER PERSON)
- Make, Calibre, Serial number of your rifles - (PLEASE PRINT SERIAL NUMBERS AND ENSURE IT IS 100% CORRECT)
- Number of bullets per rifle - this has to be an exact amount please. PLEASE NOTE A MAXIMUM OF 100 BULLETS PER RIFLE IS ALLOWED INTO MOZAMBIQUE.